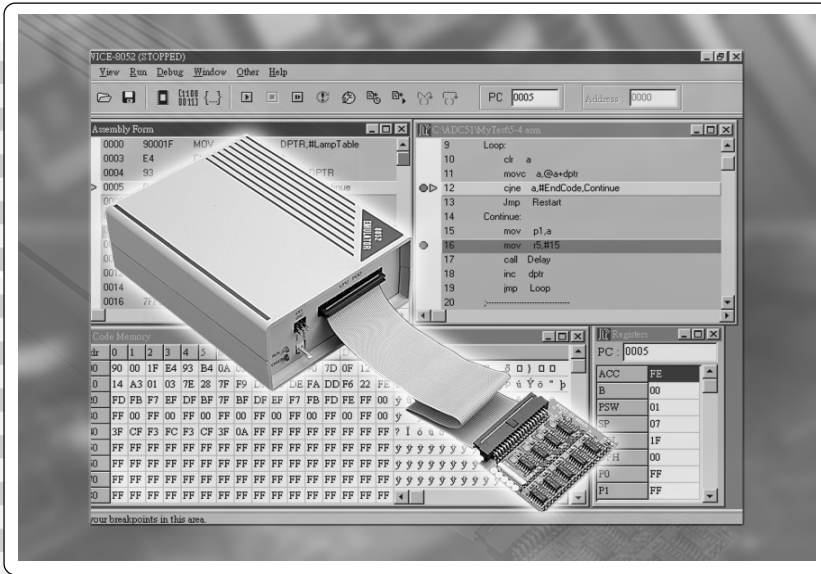


# WICE-8052 8052 IN-CIRCUIT EMULATOR



The WICE-8052, In-circuit Emulator for microcontroller 8052 series, is a well developed product by LEAP ELECTRONIC. The WICE-8052 is designed specifically for today's en-gineers who need an extreme good tool for their projects. It combines real-time emulation up to 40 MHz

## Features

### Easy-to-use Interface

The WICE-8052 can be operated both with DOS and Windows 95/98/NT interface. With multi-windows, point-and-click, menu-driven function and on-line help, WICE-8052 assist your design into a quick and efficient project.

### Real-time Hardware Breakpoints

Breakpoints are used to stop user's program execution while preserving the current program status. Breakpoints of WICE-8052 can be triggered from address and address ranges. It supports 64K hardware full range execution breakpoints, allows to stop anywhere and avoids unnecc-essary procedure.

### Real-time Trace Buffer

Trace buffer is a high speed RAM which is used to capture in a real time all activity on the microcontroller internal bus and pins.

- Stores up to 32K deep, 16-bit wide
- Be capable of exchange Forward, Backward and About Trace

- Supports trace On/Off function
- Trace buffer is accessible even when the emulation processor is running

## Other Function Specifications

- Memory display and edit while ex-ecuting in real-time.
- Special design for detecting wrong insertion and protecting from ex-ceeding 5V input.
- Trace display during execution
- Pass-points to monitor internal RAM, variables and registers while running
- Real time transparent emulation up to 40MHz
- Up to 64K of overlay program memory
- Up to 64K of overlay external data memory
- Parallel/printer port interface to the host
- Supports Windows software simulation to run program and analysis.
- Provides user-defined Macro capability for DOS software.
- Maximum Emulation Speed Up to 40 Mhz

## Standard Accessories

- Main unit
- 26-pin Printer connect cable
- 40-pin module + flat cable

- 2-pin signal line hook
- 40-pin IC socket
- DC power supply
- EXT CRYSTAL adaptor
- System software disk
- Operation manual

## Physical & Environmental Specification

- Dimension : 14cm × 11cm × 4.6 cm
- Weight : 380 gs
- Temperature : +5 °C to +45 °C
- Humidity : up to 90 % non-condensing
- Altitude : up to 5000m

## Optional Accessories

- PLCC adaptors

## Supported Devices

intel	8031	8032	80C31
	80C32	8xC51	8xC52
	8xC54		
	8xC58	8xL52	8xL54
ATMEL	89C51	89LV51	89C52
	89LV52	89C55	
PHILIPS	8031	8051	80C31
	80C32	8xC51	8xC52
	8xCL31		
	8xCL51	8xC851	
SIEMENS	8031	805	8032
	8052	C501	C502
WINDBOND			
	W78C31B	W78C32B	